

# Installation of SPI2 pressure board, MVA current/voltage board and C4R relays board on C 310 and CA 310 transmitters





## Table of contents

1. Introduction.....	5
2. Pressure board and 4 relays board on C 310 transmitter.....	5
2.1. SPI2 pressure board.....	5
2.2. C4R four relays board.....	7
3. Current/voltage board and pressure board on CA 310 transmitter.....	8
3.1. MVA current/voltage board.....	8
3.2. SPI2 pressure board.....	8



# 1. Introduction

C 310 and CA 310 multifunction transmitters can be equipped with optional boards :

- C 310 : pressure boards and 4-relay boards (ref : SPI2 and C4R)
- CA 310 : pressure board and current-voltage board (ref : SPI2 and MVA)

These boards must be correctly installed to have a proper transmitter functioning.

## 2. Pressure board and 4-relay board on C 310 transmitter

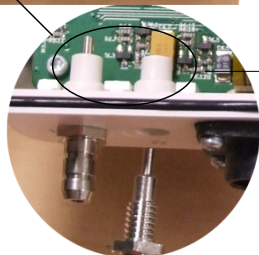
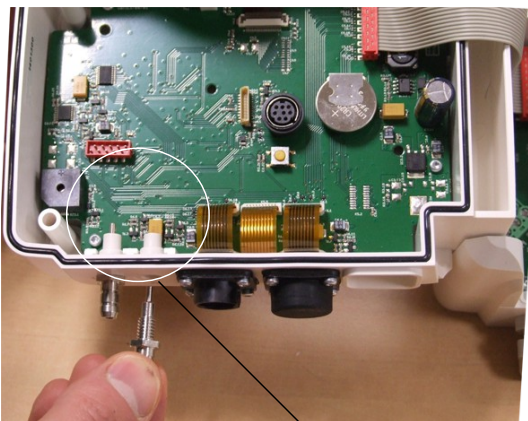
### 2.1. SPI2 pressure board

- Unscrew the plug screw of the drilling for the pressure connections.

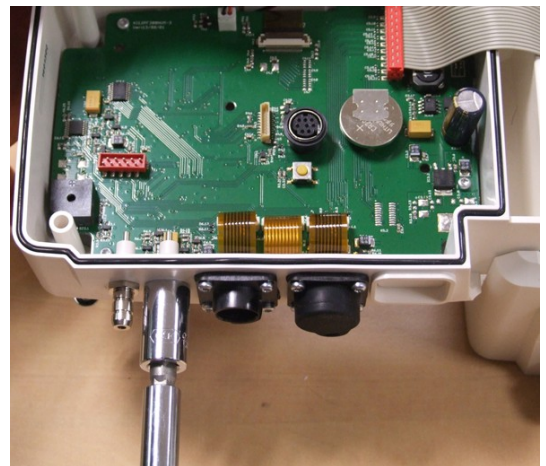


Keep the pieces in which the pressure connections must be screwed.

- Put the two pressure connections and tighten them.



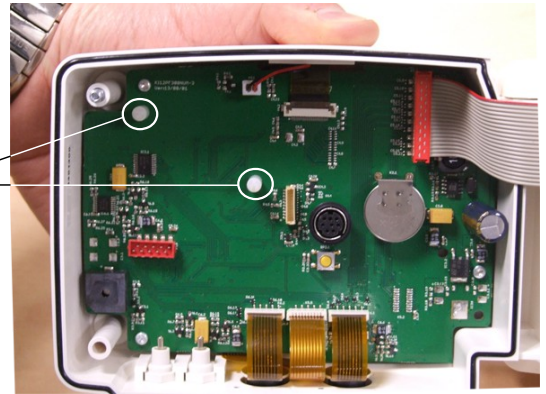
Pieces in which the pressure connections are screwed.



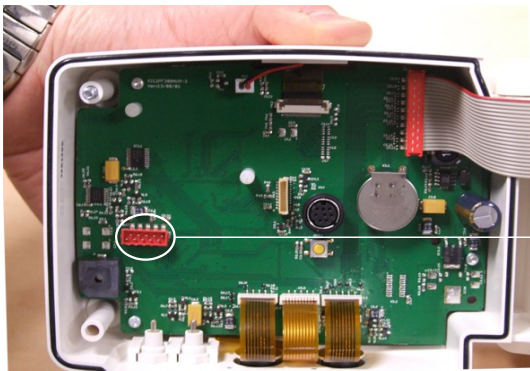
➤ Put the spacers on the digital board.



Spacers



➤ Connect and clip the pressure board on the red connector and on the spacers previously put in place.

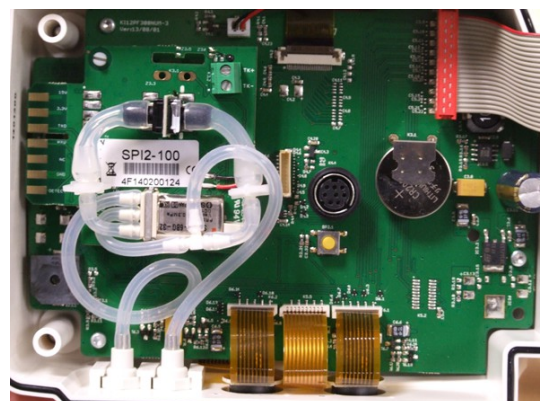
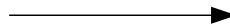
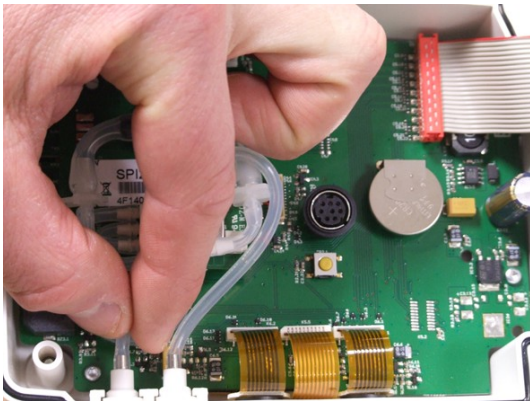


Red  
connector



➤ Connect the pipes to the corresponding pressure connections :

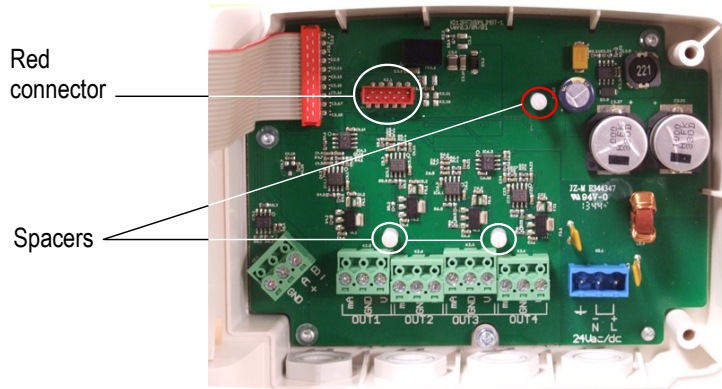
- pipe of the solenoid valve on the - pressure connection.
- pipe of the "T" on the + pressure connection.



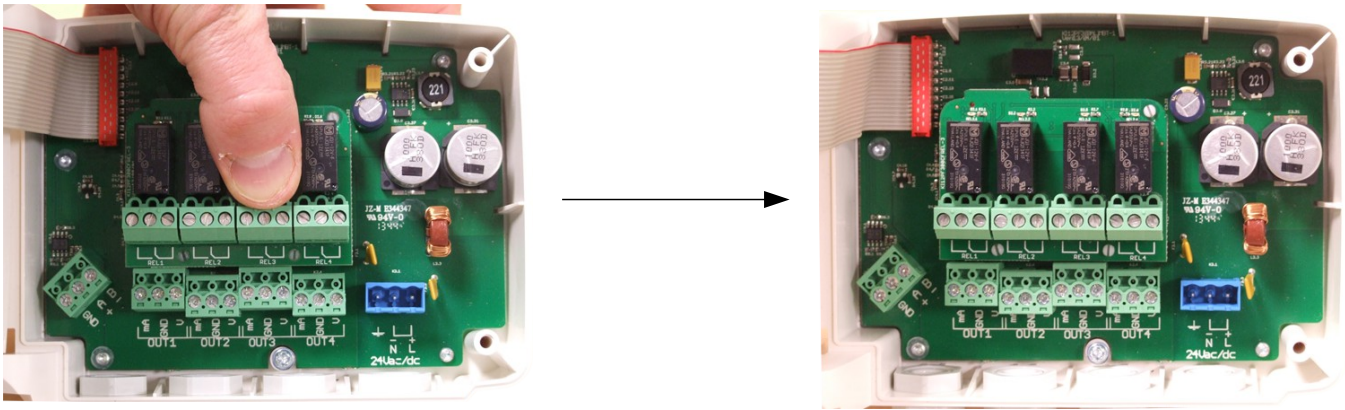
- +

## 2.2. C4R 4-relay board

- Put the 3 spacers on the “Power supply” board.



- Connect and clip the 4 relays board on the red connector and on the spacers previously put in place.

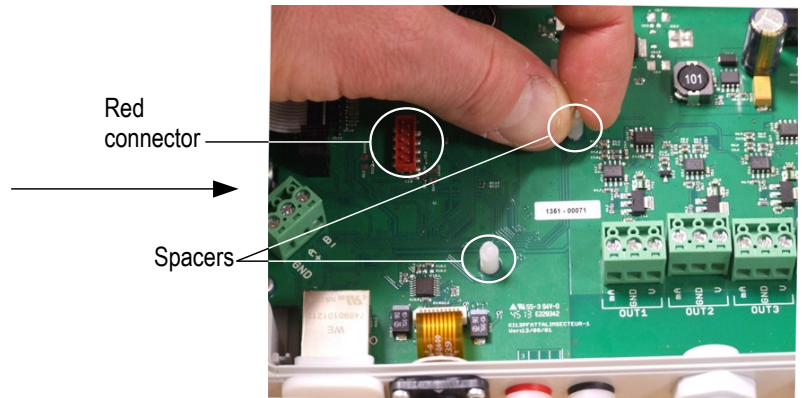
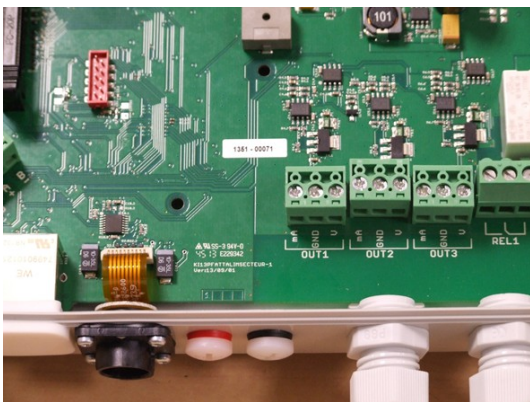


The option must be activated to activate the relay board. This option can be activated with a code available provided by Kimu.

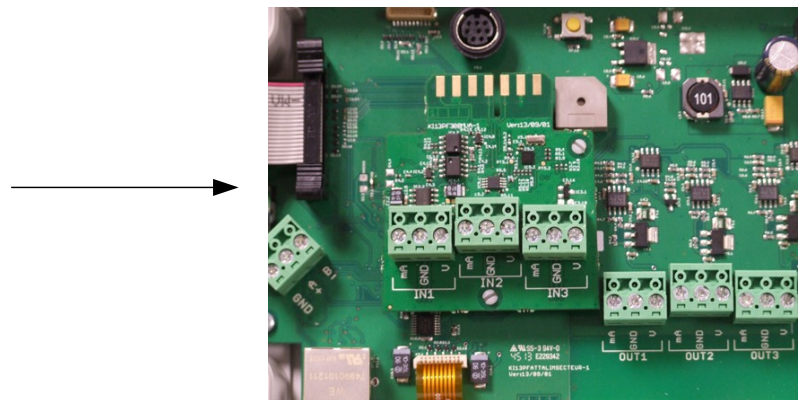
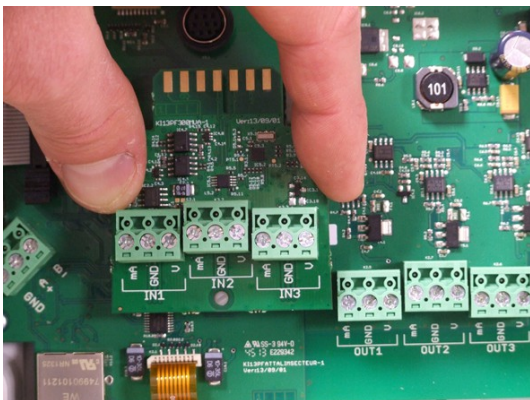
### 3. Current/voltage and pressure board on CA 310 transmitter

#### 3.1. MVA current/voltage board

- Put both spacers on the "Power supply" board.

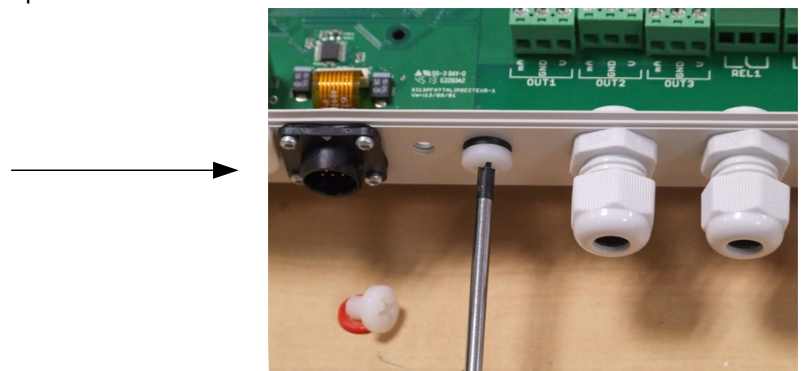
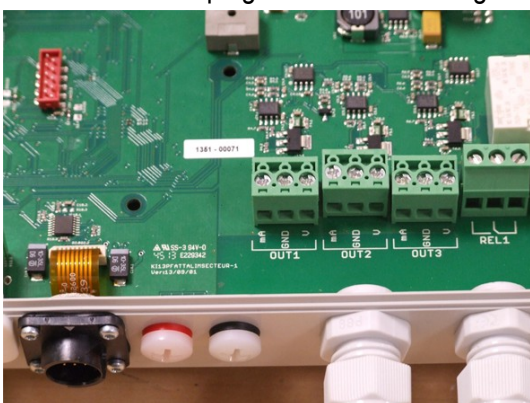


- Connect and clip the current/voltage board on the red connector and on the spacers previously put in place.



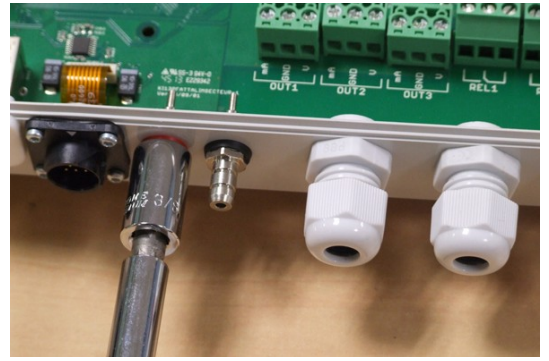
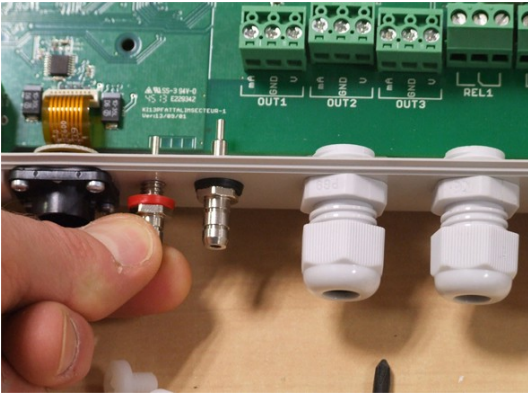
#### 3.2. SPI2 pressure board

- Unscrew the plug screw of the drilling for the pressure connections.

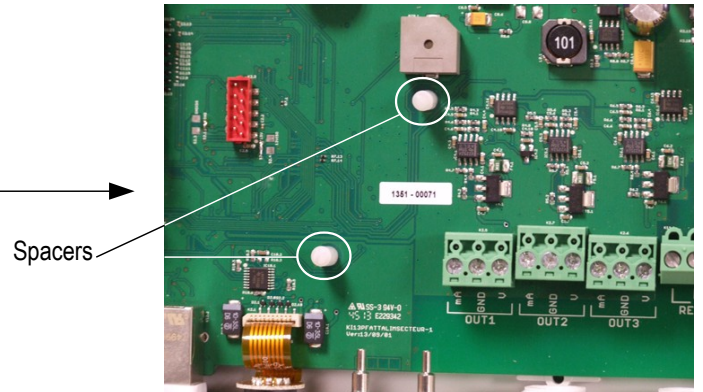
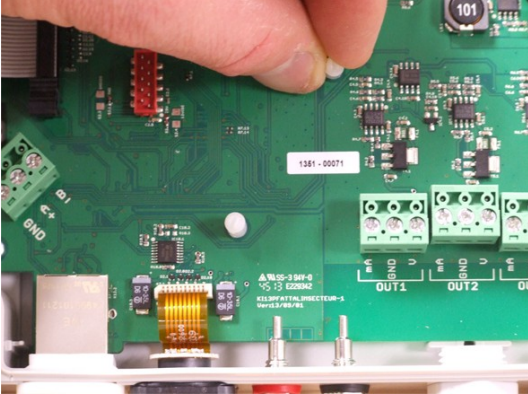




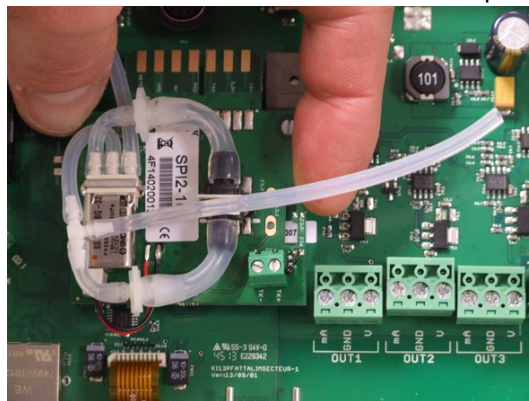
- Put the two pressure connections with the color rings and tighten them.



- Put the two spacers on the digital board.

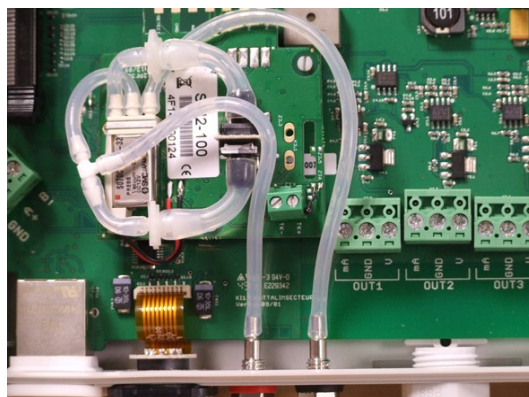


- Connect and clips the pressure board on the red connector and on the spacers previously put in place.



- Connect the pipes to the corresponding pressure connections :

- pipe of the solenoid valve on the – pressure connection.
- pipe of the “T” on the + pressure connection.



+ -





**[www.kimo.fr](http://www.kimo.fr)**

**EXPORT DEPARTMENT**  
Boulevard de Beaubourg - Emerainville - BP 48  
77312 MARNE LA VALLEE CEDEX 2  
Tel : + 33.1.60.06.69.25 - Fax : + 33.1.60.06.69.29

